

FUORITONO



Free your imagination



FUORITONO

“Si ama quello che colpisce e si è colpiti da ciò che non è ordinario.”

Aristotele



FUORITONO

Sono sempre stato più interessato all'imperfezione,
poiché è quella che spicca nella massa
- Renzo Rosso -



FUORIBIANCO 10X30



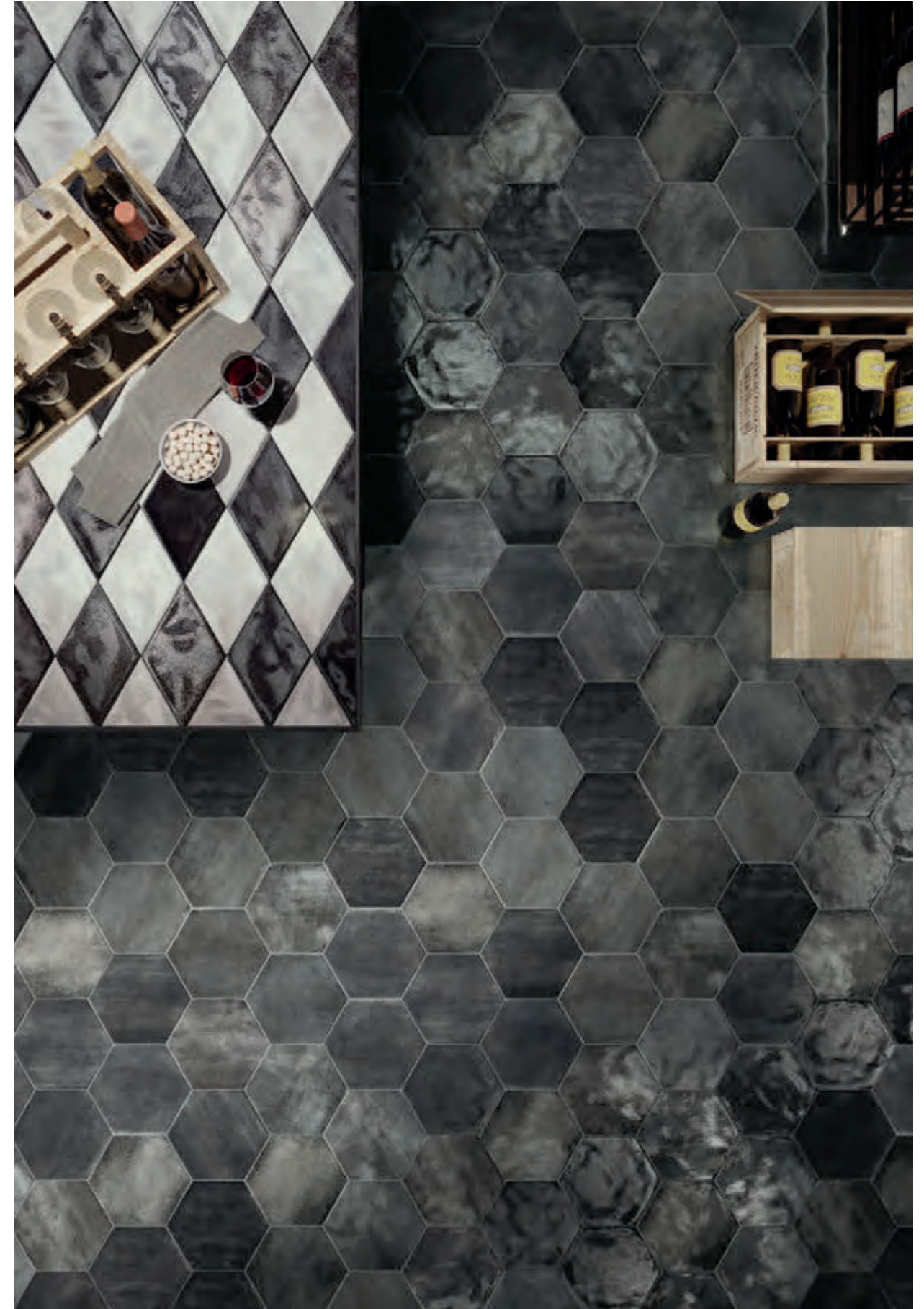
Esagona FUORIBIANCO 24x27,7
Rombo FUORIBIANCO 13,7x24
Esagona FUORINERO 24x27,7
Rombo FUORINERO 13,7x24
FUORIBIANCO 10x30



Esagona FUORIBIANCO 24x27,7
Rombo FUORIBIANCO 13,7x24
Esagona FUORINERO 24x27,7
Rombo FUORINERO 13,7x24



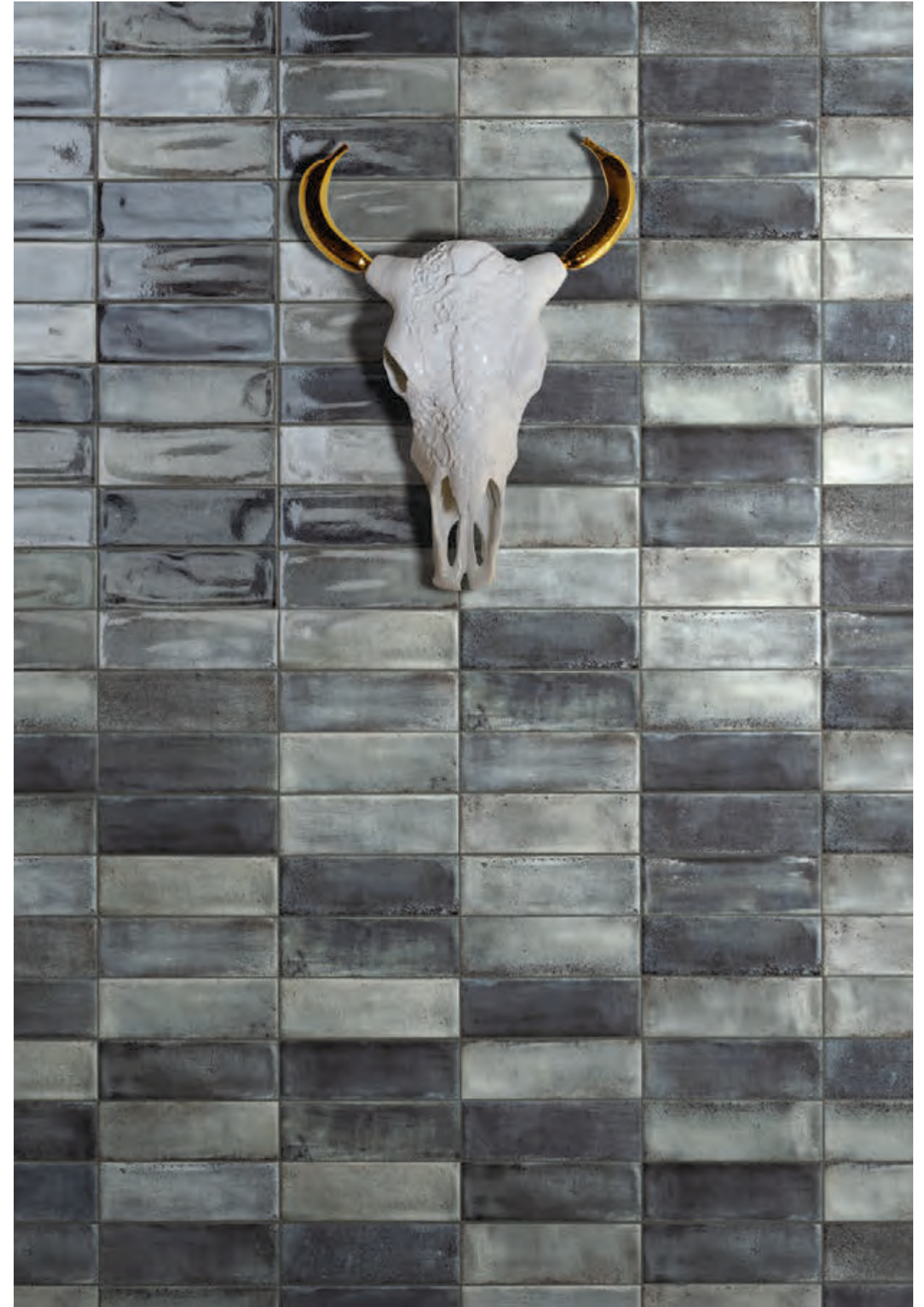
Esagona NERO Opaco 24x27,7
FUORIBIANCO 10x30



Esagona FUORINERO 24x27,7
Rombo FUORINERO 13,7x24,7
Rombo FUORIBIANCO 13,7x24,7

FUORITONO

Se tu sei diverso allora sei originale, unico e imperfetto.
Chi è perfetto a questo mondo?
- Aran Cosentino -



FUORIPETROLIO 10X30



RH



Esagona PETROLIO Opaco 24x27,7
Acanto Grigio (Collezione Acanto)
Wall 18 Amazonia Blu comp 2 pz 120x120 (Collezione Showall)



Rombo GRIGIO Opaco 13,7x24,7
Rombo FUORIPETROLIO 13,7x24,7

Rombo GRIGIO Opaco 13,7x24,7



Rombo FUORIPETROLIO 13,7x24,7



FUORITONO

Nell'unicità si ci distingue sempre
oltre ogni aspettativa
- Silvia Zoncheddu -





FUORINERO 10x30
GRIGIO Opaco 10x30



Esagona BIANCO Opaco 24x27,7
Wall 17 Palm Beach comp 2 pz 120x120 (Collezione Showall)
FUORIPETROLIO 10x30



Esagona BIANCO Opaco 24x27,7
Wall 17 Palm Beach comp 2 pz 120x120 (Collezione Showall)
FUORIPETROLIO 10x30

FUORITONO

Una goccia di colore può diventare arte
se tocca l'anima
- *Rinaldo Sidoli* -





Esagona FUORIBIANCO 24x27,7
Esagona MUSCHIO Opaco 24x27,7
FUORIMUSCHIO 10x30



Esagona MUSCHIO Opaco 24x27,
Rombo BIANCO Opaco 13,7x24
Rombo FUORIMUSCHIO 13,7x24



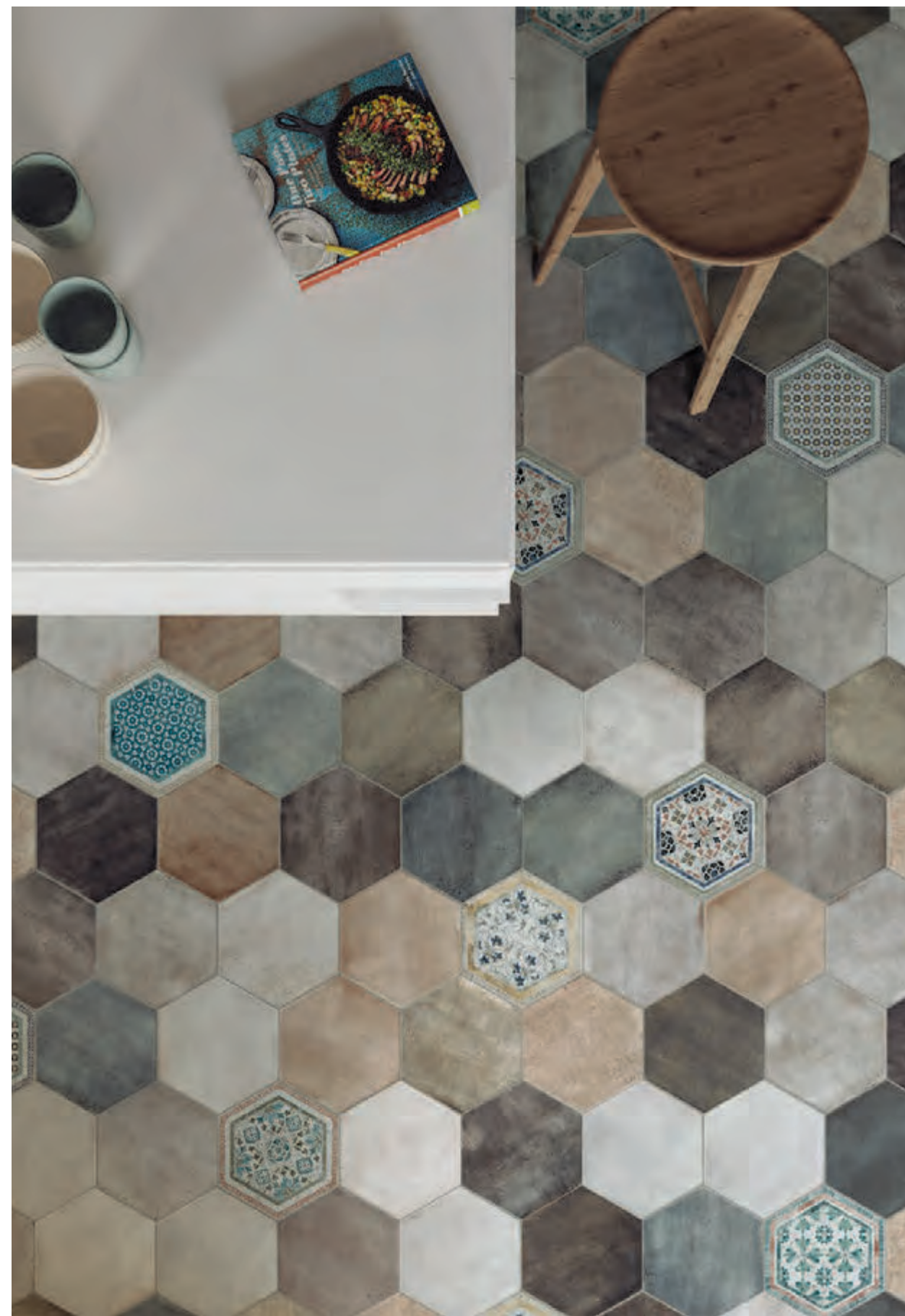
BIANCO Opaco 10x30
MUSCHIO Opaco 10x30

FUORITONO

Se ognuno di noi colorasse un frammento di terra,
il mondo sarebbe un mosaico colorato
- Pagano Filippo -



Rombo FUORIBERGE 13,7x24



Esagona FUORIMAILICA s/6 24x27,7
Esagona BEIGE Opaco, BIANCO Opaco, GRIGIO Opaco, MUSCHIO Opaco, NERO Opaco, PETROLIO Opaco 24x27,7
Rombi FUORIBIANCO 13,7x24



Esagona FUORIBIANCO 24x27,7
Esagona FUORIDAMASCO mix 24x27,7



Esagona BEIGE Opaca 24x27,7
Wall 19 Wonderland 60x120 (Collezione Showall)



Free your imagination

FUORITONO

COLLECTION



FUORITONO

Gres fine porcellanato smaltato
 Glazed Fine Porcelain Dtoneware
 Grès Cérame Fin Émaillé
 Glasiertes Feinsteinzeug
 Глазурованный Керамогранит

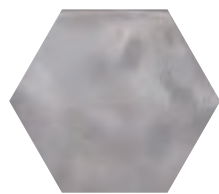


Spessore . Thickness . Épaisseur
 Stärke . Толщина . 10 mm

FUORIBIANCO Lucido



10x30 - 4"x12" ■ A11



Esagona
 24x27,7 - 9 7/16"x10 7/8" ■ A23



Rombo
 13,7x24 - 5 3/8"x9 7/16" ■ A23



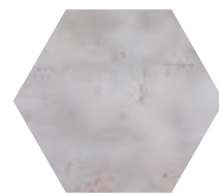
Profilo
 1,2x30 - 1/2"x12" ● B11

BIANCO Opaco Opaco

V3



10x30 - 4"x12" ■ A11



Esagona
 24x27,7 - 9 7/16"x10 7/8" ■ A23

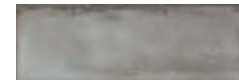
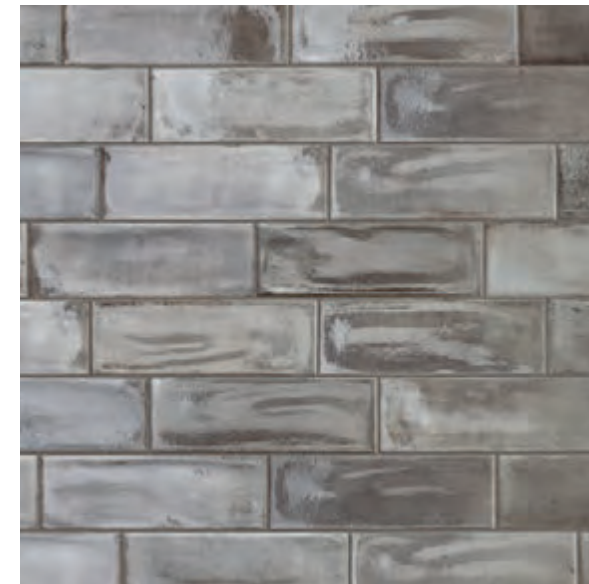


Rombo
 13,7x24 - 5 3/8"x9 7/16" ■ A23

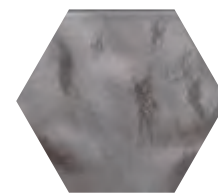


Profilo
 1,2x30 - 1/2"x12" ● B11

FUORIGRIGIO Lucido



10x30 - 4"x12" ■ A11



Esagona
 24x27,7 - 9 7/16"x10 7/8" ■ A23



Rombo
 13,7x24 - 5 3/8"x9 7/16" ■ A23



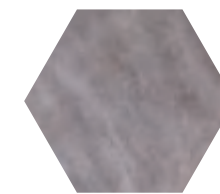
Profilo
 1,2x30 - 1/2"x12" ● B11

GRIGIO Opaco Opaco

V4



10x30 - 4"x12" ■ A11



Esagona
 24x27,7 - 9 7/16"x10 7/8" ■ A23



Rombo
 13,7x24 - 5 3/8"x9 7/16" ■ A23



Profilo
 1,2x30 - 1/2"x12" ● B11

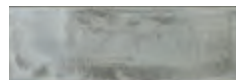
FUORITONO

Gres fine porcellanato smaltato
Glazed Fine Porcelain Dtoneware
Grès Cérame Fin Émaillé
Glasiertes Feinsteinzeug
Глазурованный Керамогранит

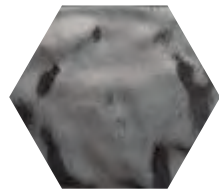


Spessore . Thickness . Épaisseur
Stärke . Толщина . 10 mm

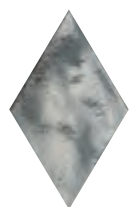
FUORIPETROLIO Lucido



10x30 - 4"x12" ■ A11



Esagona
24x27,7 - 9 7/16"x10 7/8" ■ A23



Rombo
13,7x24 - 5 3/8"x9 7/16" ■ A23



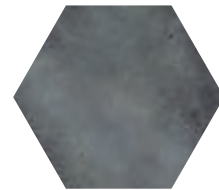
Profilo
1,2x30 - 1/2"x12" ● B11

PETROLIO Opaco Opaco

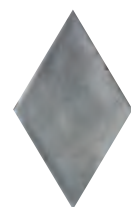
V4



10x30 - 4"x12" ■ A11



Esagona
24x27,7 - 9 7/16"x10 7/8" ■ A23

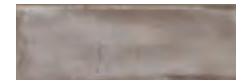


Rombo
13,7x24 - 5 3/8"x9 7/16" ■ A23

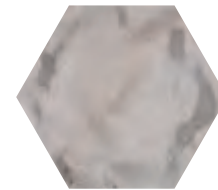


Profilo
1,2x30 - 1/2"x12" ● B11

FUORIBEIGE Lucido



10x30 - 4"x12" ■ A11



Esagona
24x27,7 - 9 7/16"x10 7/8" ■ A23



Rombo
13,7x24 - 5 3/8"x9 7/16" ■ A23



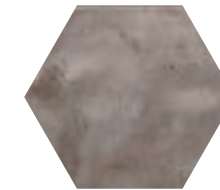
Profilo
1,2x30 - 1/2"x12" ● B11

BEIGE Opaco Opaco

V3



10x30 - 4"x12" ■ A11



Esagona
24x27,7 - 9 7/16"x10 7/8" ■ A23



Rombo
13,7x24 - 5 3/8"x9 7/16" ■ A23



Profilo
1,2x30 - 1/2"x12" ● B11

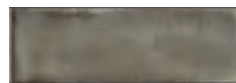
FUORITONO

Gres fine porcellanato smaltato
 Glazed Fine Porcelain Dtoneware
 Grès Cérame Fin Émaillé
 Glasiertes Feinsteinzeug
 Глазурованный Керамогранит



Spessore . Thickness . Épaisseur
 Stärke . Толщина . 10 mm

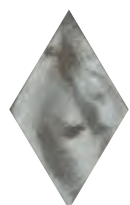
FUORIMUSCHIO Lucido



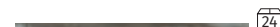
10x30 - 4"x12" ■ A11



Esagona
 24x27,7 - 9 7/16"x10 7/8" ■ A23



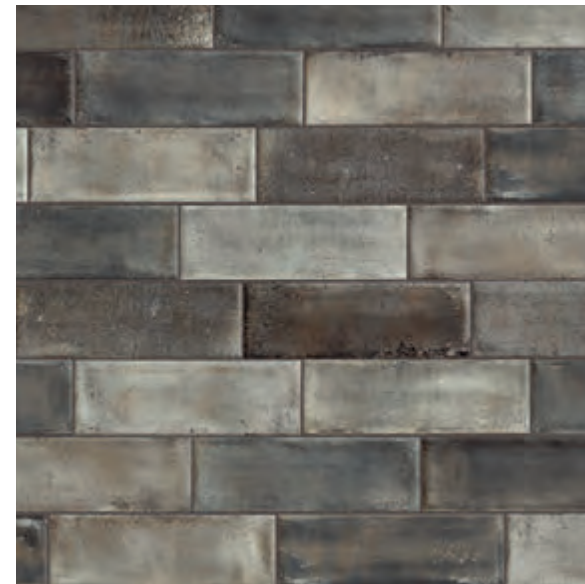
Rombo
 13,7x24 - 5 3/8"x9 7/16" ■ A23



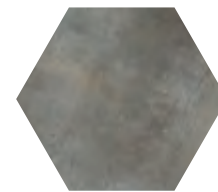
Profilo
 1,2x30 - 1/2"x12" ● B11

MUSCHIO Opaco

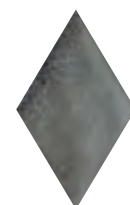
V4



10x30 - 4"x12" ■ A11



Esagona
 24x27,7 - 9 7/16"x10 7/8" ■ A23

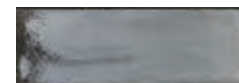
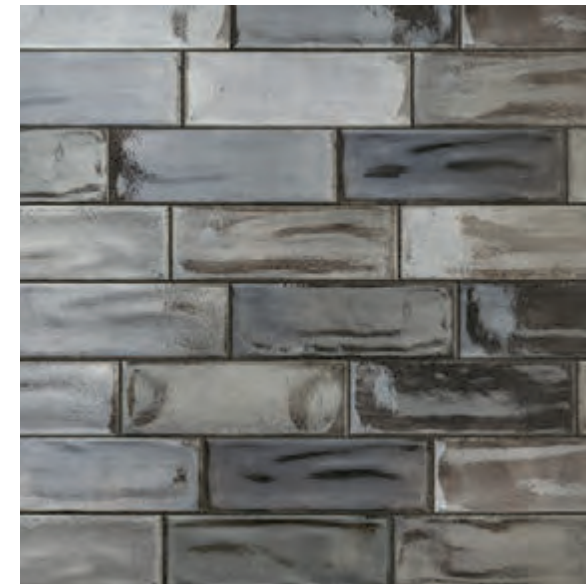


Rombo
 13,7x24 - 5 3/8"x9 7/16" ■ A23

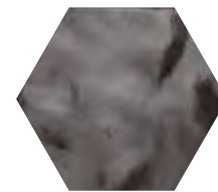


Profilo
 1,2x30 - 1/2"x12" ● B11

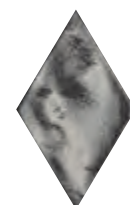
FUORINERO Lucido



10x30 - 4"x12" ■ A11



Esagona
 24x27,7 - 9 7/16"x10 7/8" ■ A23



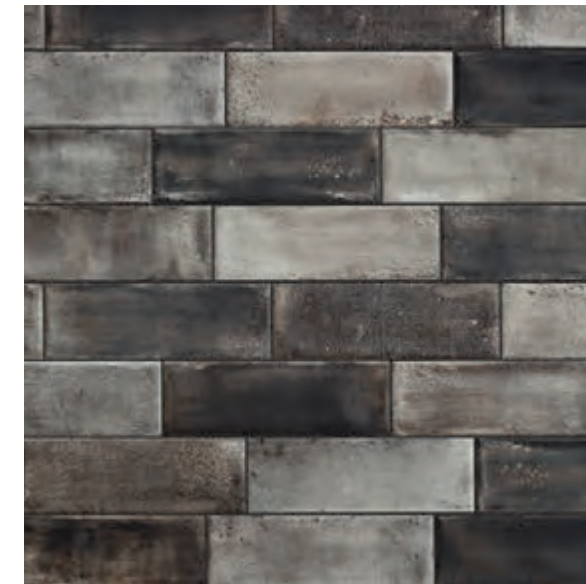
Rombo
 13,7x24 - 5 3/8"x9 7/16" ■ A23



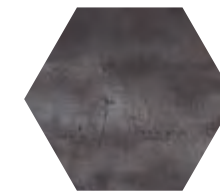
Profilo
 1,2x30 - 1/2"x12" ● B11

Nero Opaco Opaco

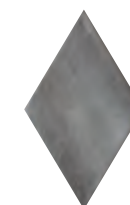
V4



10x30 - 4"x12" ■ A11



Esagona
 24x27,7 - 9 7/16"x10 7/8" ■ A23



Rombo
 13,7x24 - 5 3/8"x9 7/16" ■ A23



Profilo
 1,2x30 - 1/2"x12" ● B11

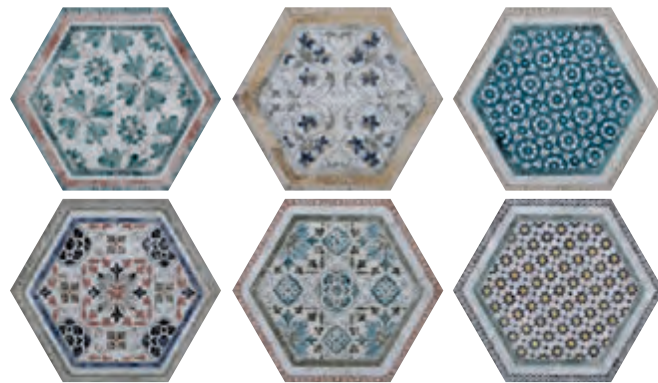
FUORITONO

Gres fine porcellanato smaltato
Glazed Fine Porcelain Dtoneware
Grès Cérame Fin Émaillé
Glasiertes Feinsteinzeug
Глазурованный Керамогранит



Spessore . Thickness . Épaisseur
Stärke . Толщина . 10 mm

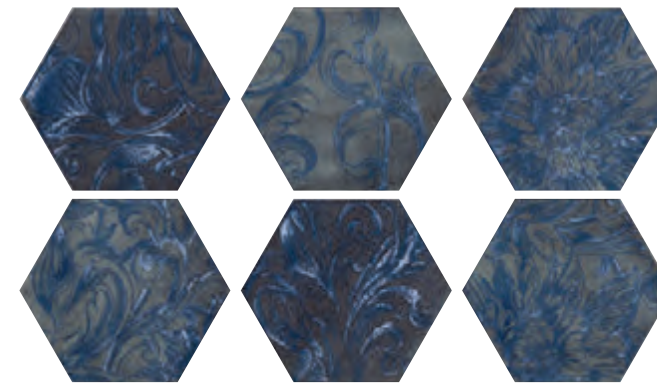
Decorì . Decors . Décors . Dekore . Декоры



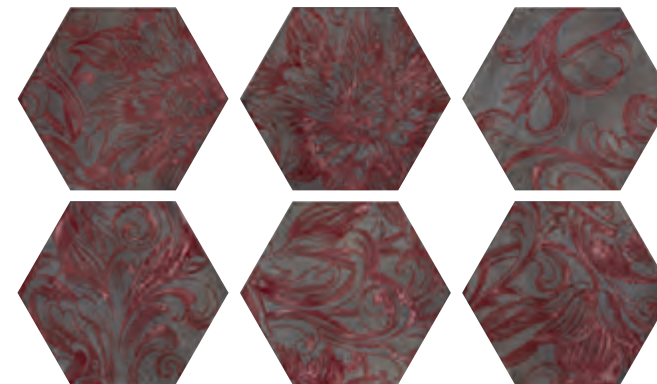
Esagona FUORIMAOLICA s/6
24x27,7 - 9 7/16" x 10 7/8" ● B17



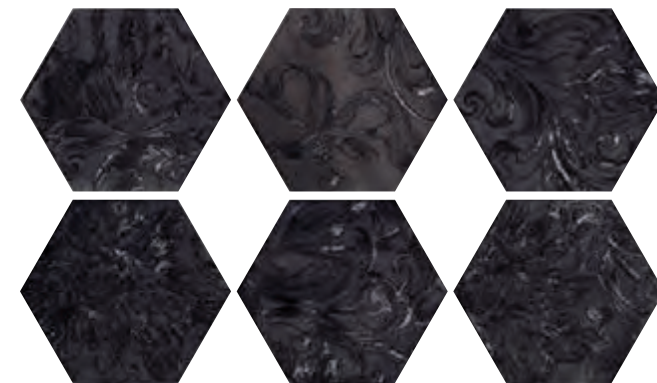
Esagona FUORIDAMASCO mix s/6
24x27,7 - 9 7/16" x 10 7/8" ● B19



Esagona FUORIDAMASCO blu s/6
24x27,7 - 9 7/16" x 10 7/8" ● B18



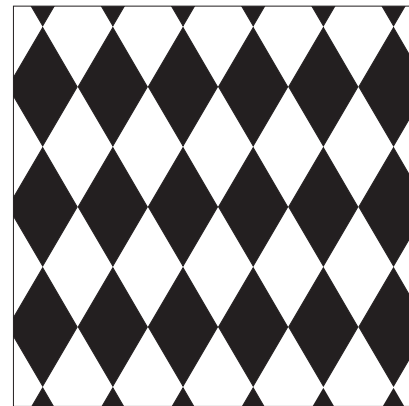
Esagona FUORIDAMASCO rosso s/6
24x27,7 - 9 7/16" x 10 7/8" ● B18



Esagona FUORIDAMASCO nero s/6
24x27,7 - 9 7/16" x 10 7/8" ● B18

SCHEMI DI POSA

Laying sketch . Schémas de pose . Modulverlegungsbeispiele . Варианты Укладки



**MODULARE 1
ROMBO**
13,7x24 - 5 3/8" x 9 7/16"



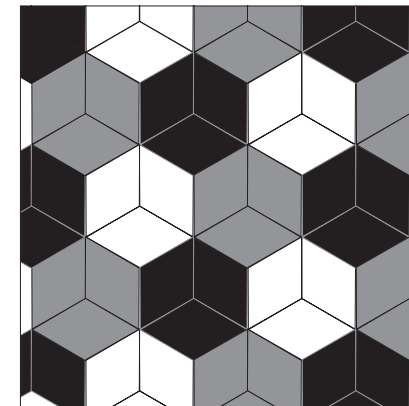
MODULO
rombo 1 50%
rombo 2 50%



**MODULARE 2
ROMBO**
13,7x24 - 5 3/8" x 9 7/16"



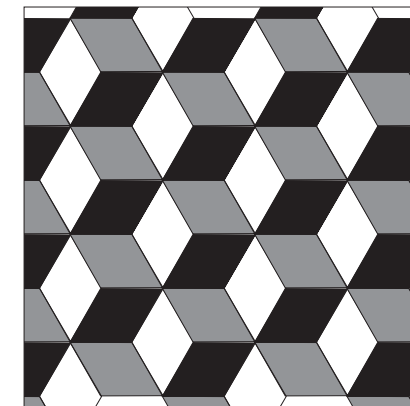
MODULO
rombo 1 50%
rombo 2 25%
rombo 3 25%



**MODULARE 7
ROMBO**
13,7x24 - 5 3/8" x 9 7/16"



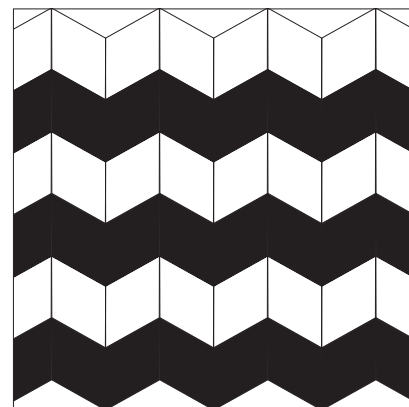
MODULO
rombo 1 33,3%
rombo 2 33,3%
rombo 3 33,4%



**MODULARE 8
ROMBO**
13,7x24 - 5 3/8" x 9 7/16"



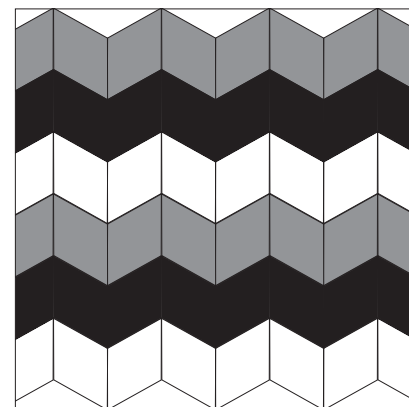
MODULO
rombo 1 33,3%
rombo 2 33,3%
rombo 3 33,4%



**MODULARE 3
ROMBO**
13,7x24 - 5 3/8" x 9 7/16"



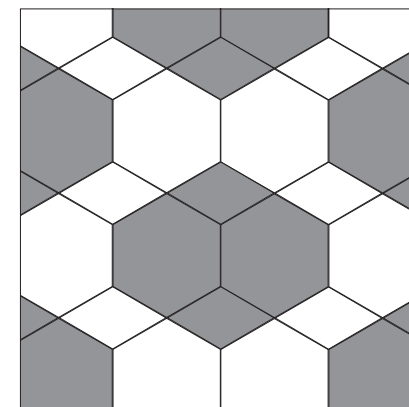
MODULO
rombo 1 50%
rombo 2 50%



**MODULARE 4
ROMBO**
13,7x24 - 5 3/8" x 9 7/16"



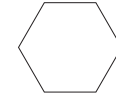
MODULO
rombo 1 33,3%
rombo 2 33,3%
rombo 3 33,4%



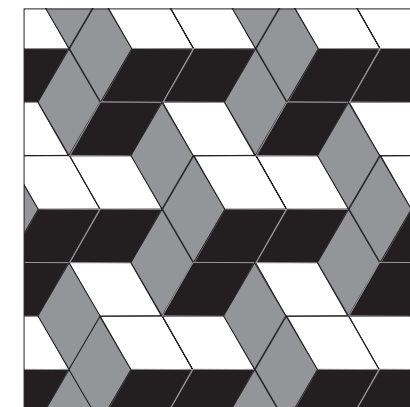
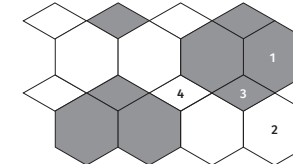
**MODULARE 9
ROMBO**
13,7x24 - 5 3/8" x 9 7/16"



ESAGONA
24x27,7 - 9 7/16" x 10 7/8"



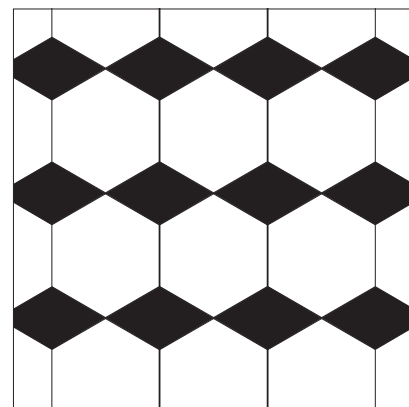
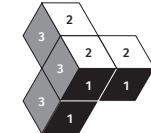
MODULO
esagona 1 37,54%
esagona 2 37,54%
rombo 3 12,46%
rombo 4 12,46%



**MODULARE 10
ROMBO**
13,7x24 - 5 3/8" x 9 7/16"



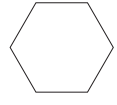
MODULO
rombo 1 33,3%
rombo 2 33,3%
rombo 3 33,4%



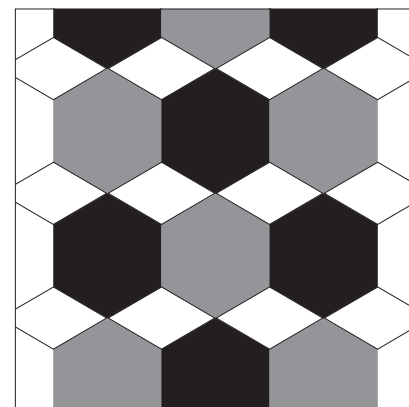
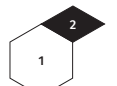
**MODULARE 5
ROMBO**
13,7x24 - 5 3/8" x 9 7/16"



ESAGONA
24x27,7 - 9 7/16" x 10 7/8"



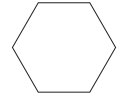
MODULO
esagona 1 75%
rombo 2 25%



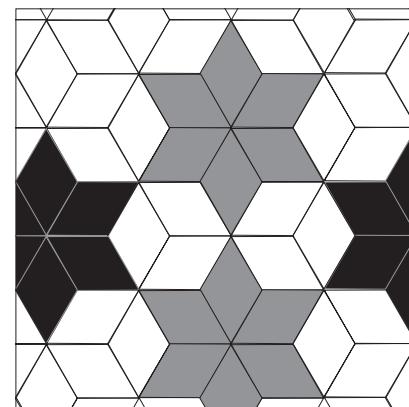
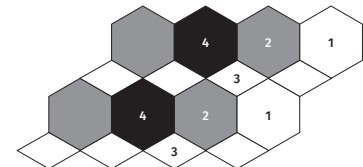
**MODULARE 6
ROMBO**
13,7x24 - 5 3/8" x 9 7/16"



ESAGONA
24x27,7 - 9 7/16" x 10 7/8"



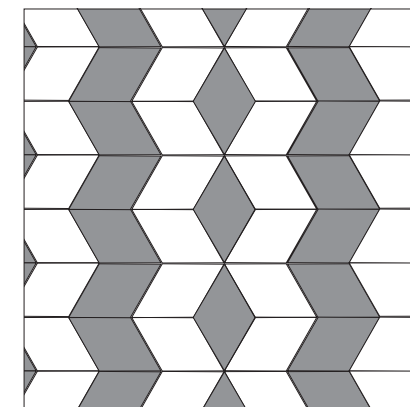
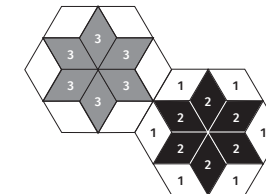
MODULO
esagona 1 18,70%
esagona 2 28,15%
rombo 3 25%
esagona 4 28,15%



**MODULARE 11
ROMBO**
13,7x24 - 5 3/8" x 9 7/16"



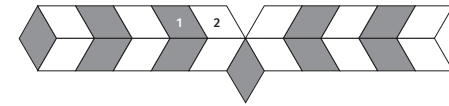
MODULO
rombo 1 50%
rombo 2 25%
rombo 3 25%



**MODULARE 12
ROMBO**
13,7x24 - 5 3/8" x 9 7/16"



MODULO
rombo 1 45,45%
rombo 2 54,55%



FUORITONO

Gres fine porcellanato smaltato
Glazed Fine Porcelain Dtoneware
Grès Cérame Fin Émaillé
Glasiertes Feinsteinzeug
Глазурованный Керамогранит



Spessore . Thickness . Épaisseur
Stärke . Толщина . 10 mm

Imballi . Packing . Emballage . Verpackung . Унакобка

SIZES	BOX			PALLET		
	PZ	MQ	KG	BOX	MQ	KG
10x30 - 4"x12"	17	0,51	10,50	96	48,96	1.024
24x27,7 - 9 7/16"x10 7/8" Esagona	20	0,97	20,50	56	54,32	1.164
13,7x24 - 5 3/8"x 9 7/16" Rombo	60	0,97	20,50	56	54,32	1.164

Listino prezzi . Price List . Tarif . Preisliste . Прайс-лист

Prezzo al m2 Price x sqm Prix / m2 Preis x qm Цена за квадратный метр	Prezzo al pezzo Price per piece Prix a l'unité Preis pro Stück Цена за штуку
A11	€ 53,00
A23	€ 66,00

Il prezzo della scelta commerciale, se disponibile, è del -50% dal prezzo della 1a scelta.
For commercial grade tiles, if available, a discount of 50% on the price of the 1st choice tiles is applied.
Le prix du choix commercial, si disponible, est de -50 % par rapport au prix du 1er choix.
Der preis für die handelsortierung beträgt, wenn verfügbar, 50 % weniger als der preis für die 1. wahl.

Tutti i decori e i battiscopa sono venduti a scatole intere.
All decors and baseboards are sold in full boxes.
Tous les decors et les plinthes sont vendus par boîtes complètes.
Formteilverkauf nur kartonsweise möglich.

Iva e trasporto esclusi, pallet fao € 8,00, mini pallet fao € 4,70.
Vat and transport not included, pallet fao € 8,00, mini pallet fao € 4,70.
Tva et transport non inclus, pallet fao € 8,00, mini pallet fao € 4,70.
Mwst und transport nicht inbegriffen, pallet fao € 8,00, mini pallet fao € 4,70.

Fasce di prezzo Price ranges Grupes des prix Preisgruppen	1° Scelta Mq 1st Choice Sqm 1 Choix Mc 1 Wahl Qm
A11	€ 53,00
A23	€ 66,00

Fasce di prezzo Price ranges Grupes des prix Preisgruppen	1° Scelta Pz 1st Choice Piece 1 Choix Unite 1 Wahl Stück
B11	€ 13,00
B17	€ 19,00
B18	€ 20,00
B19	€ 21,00

NOTE TECNICHE - TECHNICAL NOTES - NOTES TECHNIQUES - TECHNISCHE ANMRKUNGEN - ТЕХНИЧЕСКИЕ ЗАМЕЧАНИЯ
Tutti i formati sono nominali. Cir si riserva la facoltà di modificare in qualunque momento le informazioni e le caratteristiche illustrate nel presente catalogo, che non sono comunque da ritenere legalmente vincolanti. I colori e le caratteristiche estetiche dei prodotti sono quanto più possibile vicini a quelli reali, nei limiti consentiti dai processi di stampa.
All sizes are nominal. Cir reserves the right to modify the information and the characteristics illustrated in this catalogue (which are in any case not legally binding) at any moment. The colours and appearance features of the products are as close as possible to reality, within the limitation of the printing process.
Tous les formats sont nominaux. Cir se réserve la faculté de modifier à tout moments les informations et les caractéristiques figurant dans le présent catalogue, lesquelles niengagent pas par le fabricant au plan légal. Les couleurs et les caractéristiques esthétiques sont fidèles aux couleurs et caractéristiques réelles dans les limites des procédés dimpression.
Alle Formate sind Nennwerte. Die Firma Cir behält sich vor, die in diesem Katalog enthaltenen Informationen und Eigenschaften jederzeit zu ändern; sie gelten auf keinen Fall als gesetzlich bindend. Die Farben und ästhetischen Eigenschaften der Produkte kommen innrhalb der Möglichkeiten der Druckverfahren den tatsächlichen Eigenschaften so weit wie möglich nahe.
Все форматы являются номинальными. Cir оставляет за собой изменять в любой момент данные и характеристики, приведенные в настоящем каталоге, которые в любом случае не считаются юридически обязательными. Цветовая окраска и эстетические характеристики изделий приближаются как можно больше к реальным, в пределах, допускаемых процессами печати.

CONSIGLI PER LA POSA - LAYING SUGGESTIONS - CONSEILS POUR LA POSE - VERLEGEHINWEISE - РЕКОМЕНДАЦИИ ПО УКЛАДКЕ
Stendere a terra alcuni metri (almeno 3 mq) per controllare l'effetto d'insieme. Posare il materiale attingendo da più scatole controllandone accuratamente calibro, tonalità e scelta. Nella posa è consigliabile lasciare una fuga tra le piastrelle monoformato di 3 mm. È comune compito del progettista stabilire, in funzione della struttura e della destinazione d'uso del piano di calpestio, il corretto modo di applicazione delle piastrelle.
Lay some pieces of product (at least 3 sqm) to check the overall effect. Lay the material taking it from several boxes and carefully check its size accuracy, shade and material sorting. Suggested laying using grout with 3mm. However, the designers has to establish the correct way of application of the tiles depending on the structure and the foreseen utilization of the floor.
Appuyer sur le sol quelques pieds (au moins 3 mc) pour apprécier l'effet global. Poser le matériel en le prenant de plusieurs boîtes et en contrôlant l'épaisseur, les nuances et la qualité des différentes pièces. Dans la pose, il est à recommander un joint de laisser un écart entre les carreaux du même format de 3 mm. D'ailleurs c'est le concepteur qui doit établir, sur la base de la structure et de la destination d'emploi du plan de piétinement, le procédé d'application correct des carreaux.
Eine Quadratmeter (min. 3 qm) auf dem Boden legen, um die Gesamtwirkung nachzuprüfen. Wir empfehlen Fliesen aus mehreren Kartons zu verlegen, nach einer sorgfältigen Prüfung des Kalibers, des Farbtons und der Sortierung. Beim Verlegen schlagen wir eine Fuge von 3 mm beim gleichen Format. Es ist auf jeden Fall Aufgabe des Planers, nach der Struktur und dem Verwendungszweck der Trittfäche, die richtige Verlegeart der Fliesen zu bestimmen.
Разложить изделия на полу для проверки общего эффекта. Укладывать материал, тщательно проверяя калибр, тональность и сорт. При укладке плитки оставлять шов между плиткой одного формата 3 мм. моноформатной укладки, так и для укладки модулем.

CE
GRUPPO ROMANI S.P.A. INDUSTRIE CERAMICHE VIA A. VOLTA 9, 22125 42013 CASALGRANDE (RE)
05 001CPR2013-07-01
EN 14411:2012
Piastrelle di ceramica pressate a secco, con assorbimento di acqua E _s ≤ 0,5%, per pavimentazioni interne ed esterne. Dry pressed ceramic tile, with water absorption E _s ≤ 0,5%, for internal and external floorings.



© Copyright 2021 Gruppo Romani S.p.A. Industrie Ceramiche

Gruppo Romani S.p.A. Industrie Ceramiche
www.grupporomanispa.com



Gres Fine Porcellanato Smaltato Cir - ISO 13006 Bla GL . Blb GL
Glazed Fine Porcelain Stoneware Cir - ISO 13006 Bla GL . Blb GL | Grès Cérame Fin Émaillé Cir - ISO 13006 Bla GL . Blb GL
Glasiertes Feinsteinzeug Cir - ISO 13006 Bla GL . Blb GL | Глазурованный Керамогранит Cir - Iso 13006 Bla GL . Blb GL.

	Proprietà fisico-chimiche Physical chemical properties / Propriétés physico chimiques Physisch chemische Eigenschaften / Физико химические свойства	Metodo di prova Standard of test / Norme du test Testnorm / Метод испытаня	FUORITONO
	Dimensioni Dimensions Abmessungen Размеры		
	Aspetto superficiale Surface appearance Aspect superficiel Oberflächenbeschaffenheit Вид поверхности		≥ 95%
	Lunghezza e larghezza Length and width Longueur et largeur Länge und Breite Длина и ширина	W 10 test	± 0,5% ± 2 mm ± 0,5% ± 2 mm
	Spessore Thickness Épaisseur Stärke Толщина		± 5% ± 0,5 mm
	Rettilineità degli spigoli Straightness of sides Rectitude des arêtes Kantengeradheit Прямолинейность кромок		± 0,3% ± 1,5 mm
	Ortogonalità Rectangularity Orthogonalité Rechtwinkligkeit Ортогональность		± 0,3% ± 1,5 mm
	Planarità Surface flatness Planéité Ebenflächigkeit Плоскостность	ISO 10545-2 ASTM C 485	± 0,3% ± 1,5 mm Warpage diagonal edge ± 0,4%
	Variazioni di tono Shade variations Variations de nuance Tonvariationen Степень разнотонности		MODERATA VARIATIONE MODERATION MODERÉE MODERATE VERÄNDERUNG MODERATE VERÄNDERUNG FORTE STONALIZZAZIONE FORTE STONALISATION STARKES STONALISIEREN STARKES STONALISIEREN
	Assorbimento d'acqua Water absorption Absorption d'eau Wasseraufnahme Водопоглощение	ISO 10545 - 3	E ≤ 0,1% Bla GL
	Resistenza al gelo Frost resistance Résistance au gel Frostbeständigkeit Морозостойкость	ISO 10545 - 12	Ingelivo Frost proof Ingelief Fröstsicher Морозостойкость
	Coefficiente di dilatazione termica lineare (50°/400°) Linear thermal expansion coefficient (50°/400°) Dilatation thermique linéaire (50°/400°) Lineare Wärmeausdehnung (50°/400°) Козффициент линейного теплового расширения	ISO 10545 - 8	Metodo disponibile Test method available Méthode disponible Verfügbares Verfahren Имеющийся Метод
	Resistenza agli sbalzi termici Resistance to thermal shock Résistance aux écarts de température Temperaturwechselbeständigkeit Стойкость к тепловым перепадам	ISO 10545 - 9	Resistente Resistant Résistant Widerstandsfähig Устойчивый
	Resistenza al cavillo di piastrelle smaltate Crazing resistance of glazed tiles Résistance à la tessellure des carreaux émaillés Haarrißbeständigkeit der glasierten Fliesen Стойкость глазурованной плитки к кракелюру	ISO 10545 - 11	Resistente Resistant Résistant Widerstandsfähig Устойчивый
	Resistenza della superficie (scala MOHS) Scratch hardness (MOHS scale) Dureté de la surface (échelle MOHS) Oberflächenhärte (MOHS skala) Поверхностная прочность по (шкале Мооса)	EN 101	MOHS > 6
	Resistenza alla abrasione della superficie di piastrelle smaltate Resistance to surface abrasion of glazed tiles Résistance à l'abrasion de la surface des carreaux émaillés Widerstand gegen Abrieb der Oberfläche der glasierten Fliesen Стойкость глазурованной плитки к поверхностному истиранию	ISO 10545 - 7	Classe 3-4-5 Class 3-4-5 Classe 3-4-5 Gruppe 3-4-5 Класс 3-4-5
	Resistenza ai prodotti chimici di uso domestico Resistance to household chemicals Résistance aux produits chimiques ménagers Widerstand gegen Haushaltsreingiger Стойкость к бытовым химикатам	ISO 10545 - 13	Classe A Class A Classe A Gruppe A Класс A
	Resistenza agli acidi e alle basi a bassa concentrazione Resistance to low concentrations of acids and bases Résistance aux acides et aux bases à faible concentration Widerstand gegen schwach konzentrierten Säuren und Laugen Стойкость к низкоконцентрированным кислотам и щелочам		Classe LA-HA Class LA-HA Classe LA-HA Gruppe LA-HA Класс LA-HA
	Resistenza alle macchie di piastrelle smaltate Resistance to stains of glazed tiles Résistance aux taches des carreaux émaillés Widerstand gegen Fleckenbildner der glasierten Fliesen Стойкость глазурованной плитки к образованию пятен	ISO 10545 - 14	Classe 5 Class 5 Classe 5 Gruppe 5 Класс 5
	Resistenza alla flessione Bending strength Résistance à la flexion Biegezugfestigkeit Прочность на изгиб	Modulo di rottura - Modulus of rupture Module de rupture - Bruchmodul - Модуль жесткости Carico di rottura - Breaking of rupture Charge de rupture - Bruchkraft - Наррузка	ISO 10545 - 4 R ≥ 35 N/mm² S ≥ 1300 N
	Caratteristiche antiscivolo / Coefficiente d'attrito statico Anti-slip properties / Static coefficient of friction Caractéristiques antiderapantes / Coefficient de frottement statique Rutschhemmende Eigenschaft / Statischer Reibungskoeffizient Характеристики устойчивости к скольжению / Коэффициент статического трения	DIN 51130 (FUORITONO OPACO) B.C.R.A. REP. CEC. 6/81 (FUORITONO OPACO) DIN 51097 (FUORITONO OPACO)	R10 0,40 ≤ M ≤ 0,74 Classe B Class B Classe B Gruppe B Класс B
		DCOF Acu Test (FUORITONO OPACO)	M > 0,42

DAL 1967

CIR - MANIFATTURE CERAMICHE

www.cir.it

Via A. Volta 23/25 - 42013 Casalgrande (RE) Italy

Tel. +39-0522-998911 - Fax Italy +39-0522-998910 - Fax Export +39-0522-998930

